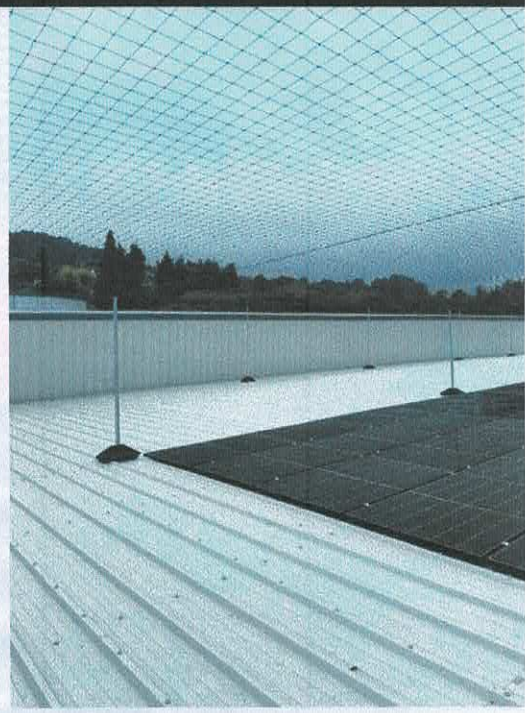


**BIRD PROOFING
PRODUCTS
LIMITED**

Product Brochure



Single Slab 1mtr or 2mtr (Adjustable angle on post)

- Can be used as an alternative to the rubber mounts currently used
- Much stronger & rigid stanchion
- Posts can be angled to suit any gradient

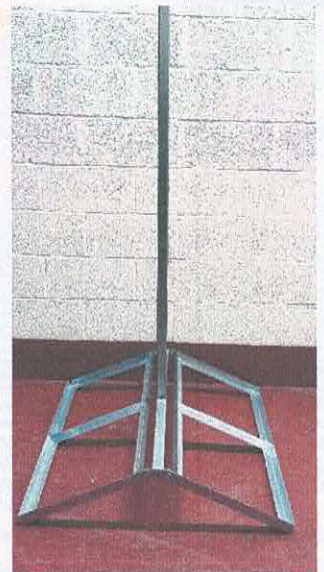


Two Slab Ridge Stanchion

- To be used on any ridge
- Takes 450mm x 450mm slabs (17.6" x 17.6")
- Galvanised finish or can be powder coated to any RAL number
- Nuts & Bolts included
- Excludes slabs

Four Slab Ridge Stanchion

- To be used on any ridge
- Takes 450mm x 450mm slabs (17.6" x 17.6")
- Galvanised finish or can be powder coated to any RAL number
- Nuts & Bolts included
- Excludes slabs



Two Slab Gully/Valley Stanchion

- To be used on any ridge
- Takes 450mm x 450mm slabs (17.6" x 17.6")
- Lock-in bar available if required
- Galvanised finish or can be powder coated to any RAL number
- Nuts & Bolts included
- Excludes slabs

Four Slab Gulley/Valley Stanchion

- To be used on any ridge
- Takes 450mm x 450mm slabs (17.6" x 17.6")
- Lock-in bar available if required
- Galvanised finish or can be powder coated to any RAL number
- Nuts & Bolts included
- Excludes slabs

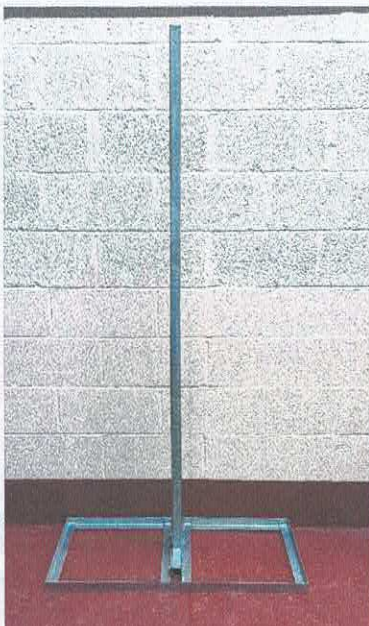
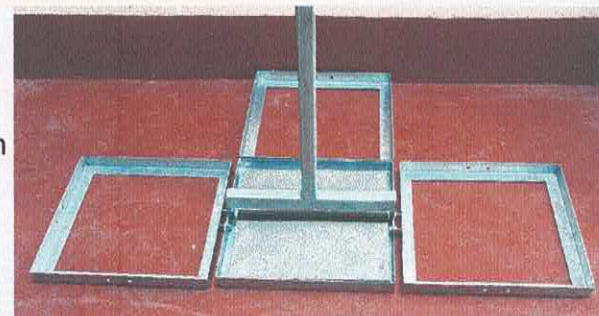


Single Slab Stanchion

- Replaces the standard rubber base & Unistrut
- Available in 1mtr & 2mtr as standard- additional sizes available on request
- Takes 450mm x 450mm slabs (17.6" x 17.6")
- Galvanised finish or can be powder coated to any RAL number
- Nuts & Bolts included
- Excludes slabs

Single Slab Additional Base

- Can be added to a single slab stanchion in any configuration
- This will allow extra weight to be added
- Simply bolt onto a single slab stanchion



Two Slab Stanchion

- Used as an intermediate stanchion
- Available in 1mtr & 2mtr as standard- additional sizes available on request
- Takes 450mm x 450mm slabs (17.6" x 17.6")
- Galvanised finish or can be powder coated to any RAL number
- Nuts & Bolts included
- Excludes slabs

Four Slab Stanchion

- Used as an external or corner stanchion
- Available in 1mtr & 2mtr as standard- additional sizes available on request
- Takes 450mm x 450mm slabs (17.6" x 17.6")
- Galvanised finish or can be powder coated to any RAL number
- Nuts & Bolts included
- Excludes slabs

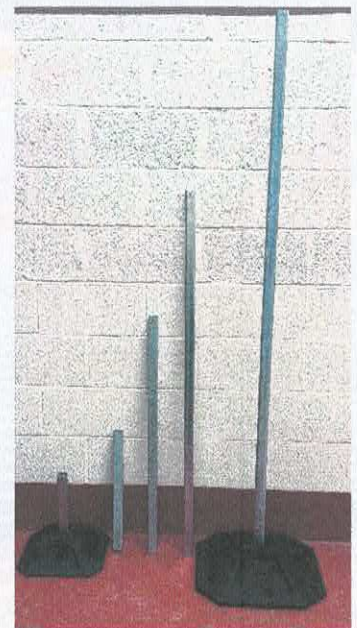


2mtr x 1mtr Gate

- Self-supporting
- Lock plate fitted as standard
- Galvanised finish or can be powder coated to any RAL number
- Emergency push bar/pad can be fitted if required
- Other sizes are made to order

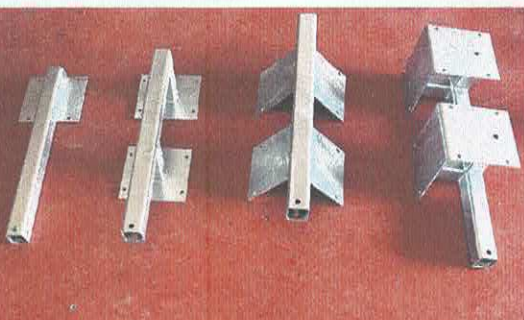
Box Section Posts

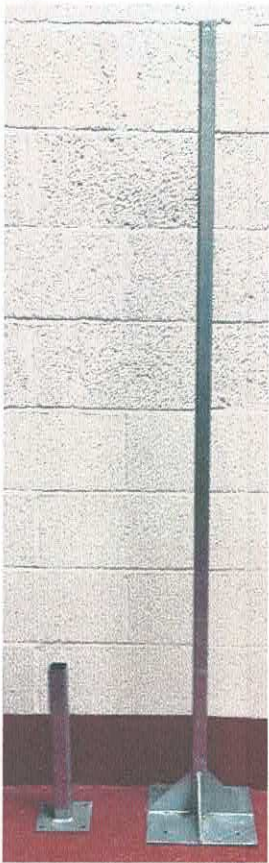
- This can replace Unistrut currently used
- 4 holes in the top to take wire or barrel strainer
- Fits inside rubber bases
- Galvanised finish or can be powder coated to any RAL number



Stand-off bracket (flat, stand-off, internal & external)

- Used to extend past the gutter for a vertical post
- Various sizes available on request
- Galvanised finish or can be powder coated to any RAL number





Floor Mounted Posts

- Various sizes available on request
- Galvanised finish or can be powder coated to any RAL number
- Fillets fitted to the base for extra support

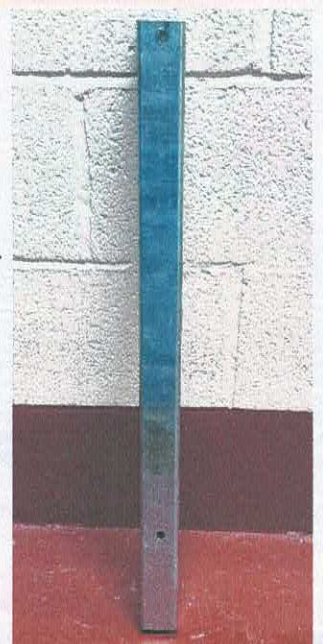
Scaffold pole with 2 clamps

- Predrilled to take wire and barrel strainers
- Comes in 1mtr & 2mtr as standard
- Other sizes available on request
- 2 clamps included
- Galvanised finish or can be powder coated to any RAL number



Extension piece

- 50mm x 50mm extension piece
- Fits over standard posts
- Simply drill 2 holes once at the required height
- Galvanised finish or can be powder coated to any RAL number



Dormer bracket- corner & intermediate

- Used on outside edges on flat roofs
- Any height/size available
- 2 holes to take wire or barrel strainer
- Galvanised finish or can be powder coated to any RAL number